

FILMBASE[®]

UTD^{AR} Film User Manual



Tel: +86 755-28505346

Email: info@smartfilmbase.com

Office HQ: 31F 3A Bldg Smart Park Baohe Road,
Baolong, Longgang District, Shenzhen, China

www.smartfilmbase.com

[www.twitter.com/smartfilmbase](https://twitter.com/smartfilmbase)

www.facebook.com/smartfilmbase

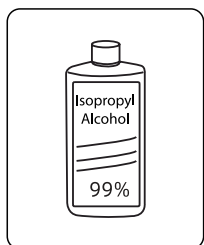
www.youtube.com/@smartfilmbase

www.pinterest.com/filmbase_official

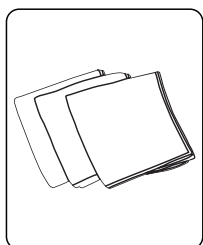
www.instagram.com/filmbase_official

www.linkedin.com/company/filmbase-official

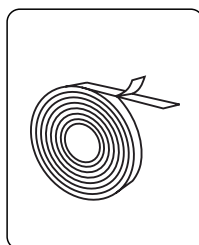
Tools required for installation



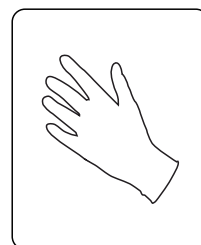
Glass Cleaner



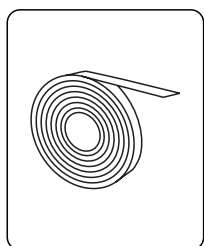
Absorbent Cloth &
Lint-free Cloth



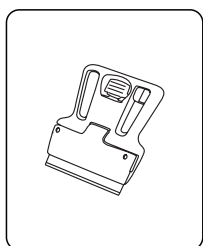
3M Tape



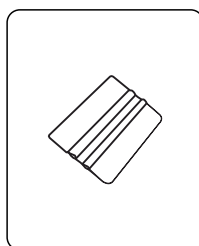
Nitrile protective gloves
(non-powdered)



Decorative Strip



Window Blade



So edge squeegee

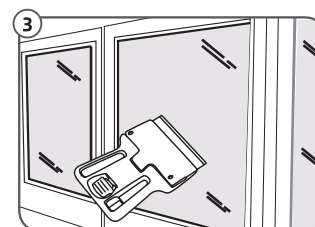
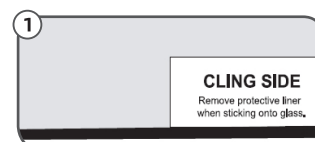
*Note: If you need the above accessories, please buy them separately from FILMBASE.

Before Installation

- (1) Remove the lm from the package and place it with the self-adhesive (cling) side of UTD facing up. Make sure you do not bend the lm to avoid creating creases.
- (2) Apply UTD to the installation area to make sure it will t to the glass area. If the edges of the window/door frame are not square, you can use scissors to trim the lm to t. We recommend that you use a pair of tailors scissors for the best results possible.

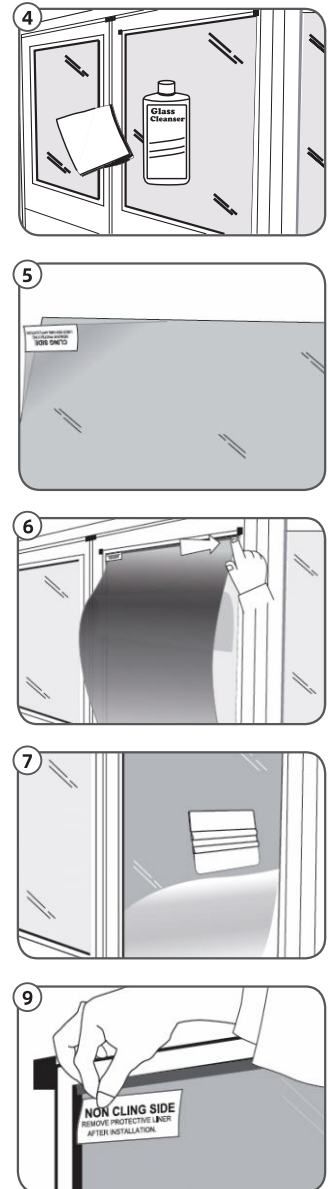
Installation Instructions

- (1) Make sure the self-adhesive (cling) side of UTD is facing up.
- (2) Place UTD on a dust free and at surface. Wipe the cling side with alcohol to remove any dust.
- (3) Use a window scraper or blade to remove any dirt / blemishes from the glass surface. Repeat this procedure until the surface and edges of the glass are free from glue residue, smooth with no dirt or dirty spots which will aect the installation of UTD.



Clean glass is extremely important. Any dirt, dust will create bubbles during installation.

- (4) Spray the glass with glass with alcohol and clean with an absorbent cloth. Repeat this process until the surface is completely clean and dry. Look at the glass from different angles to make sure it completely clean.
- (5) Put on clean nitrile gloves and peel o 3 inches of the protective liner covering the self-adhesive side.
- (6) Align the edge of the UTD on all edges of the glass and run your nger to press down along the top edge (the adhesive strip will hold the lm in the place).
- (7) Gradually pull away the protective liner no more than 5 inches at a time. Using the so edge squeegee move downwards on UTD working in horizontal lines le to right to disperse any air bubbles. Do so slowly, inch by inch to avoid any bubbles. If any small bubbles are still visible, carefully li the lm and reapply. If any bubbles are visible, mark the spot with an erasable marker, li the lm and carefully check for any dust particles. If dust has gotten stuck to the lm use an adhesive tape or lint roller to carefully remove the dust particles. Reapply UTD using the squeegee.
- (8) Repeat the above process until you have a bubble free installation. Use so edge squeegee to squeeze out any small bubbles along the edges of the lm.
- (9) Li the tag and carefully remove the protective liner (non-cling side).



Tel: +86 755-28505346

Email: info@smartfilmbase.com

Office HQ: 31F 3A Bldg Smart Park Baohe Road,
Baolong, Longgang District, Shenzhen, China

www.smartfilmbase.com

[www.twitter.com/smartfilmbase](https://twitter.com/smartfilmbase)

www.facebook.com/smartfilmbase

www.youtube.com/@smartfilmbase

www.pinterest.com/filmbase_official

www.instagram.com/filmbase_official

www.linkedin.com/company/filmbase-official